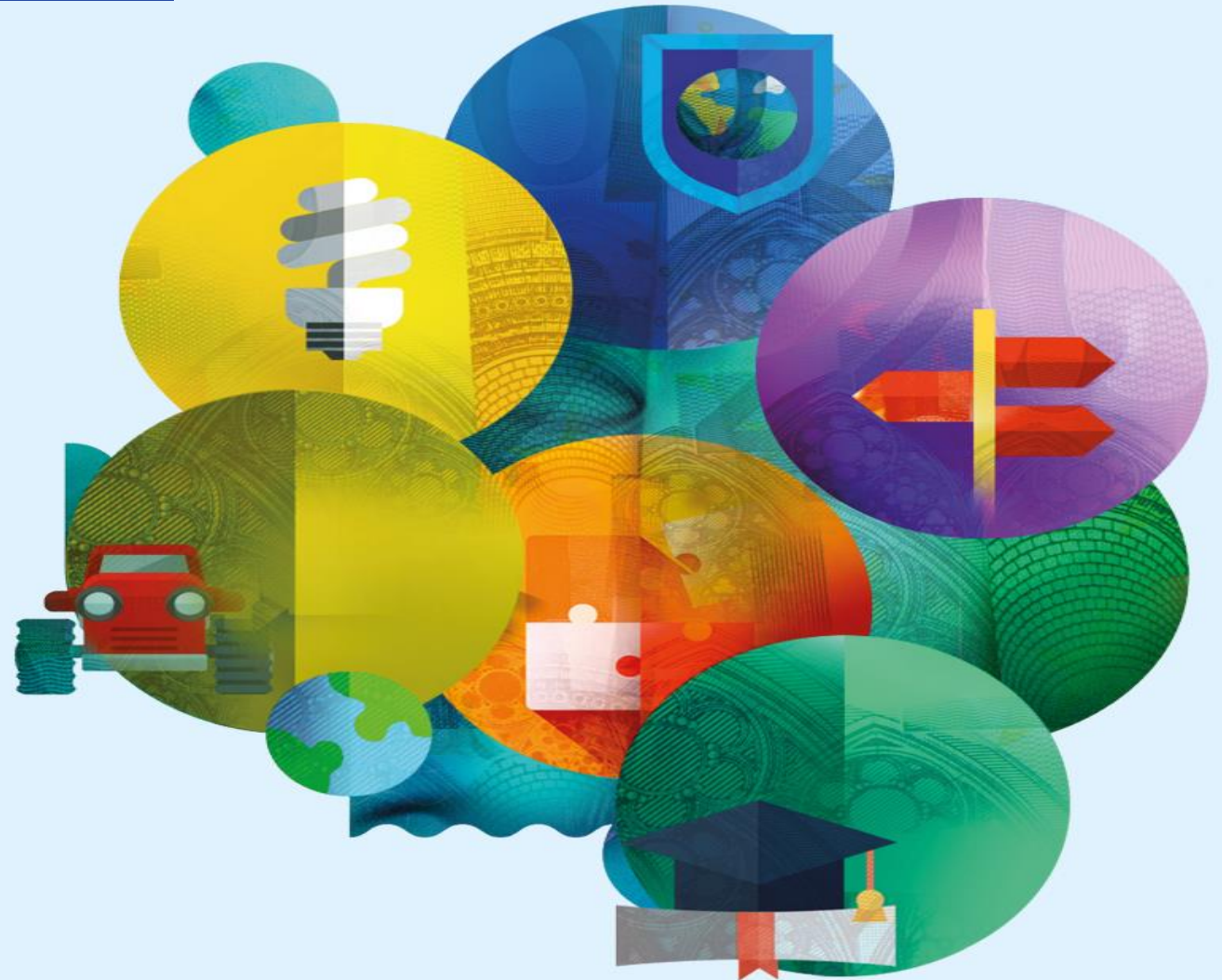


CAP post 2020 and the opportunities for plant proteins

Plant protein seminar
Helsinki, 18 November 2019

DG AGRI, European Commission
Silke Boger

#FutureofCAP



FOLLOW-UP OF THE EU PROTEIN REPORT

1. CAP Strategic plans

2. Research & Innovation

1. Horizon Europe
2. EIP-AGRI

3. Market analysis and transparency

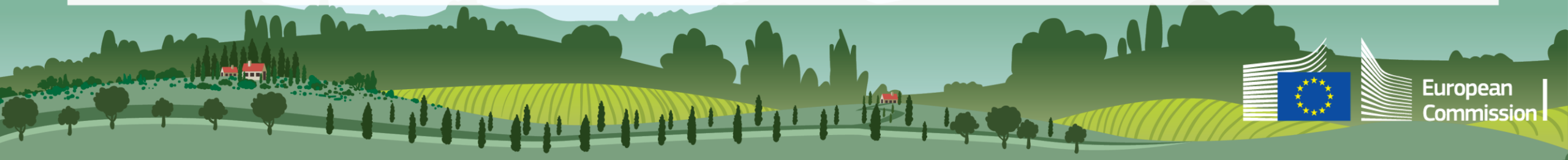
1. Improve data and price collection
2. Crops Market Observatory

4. Promotion

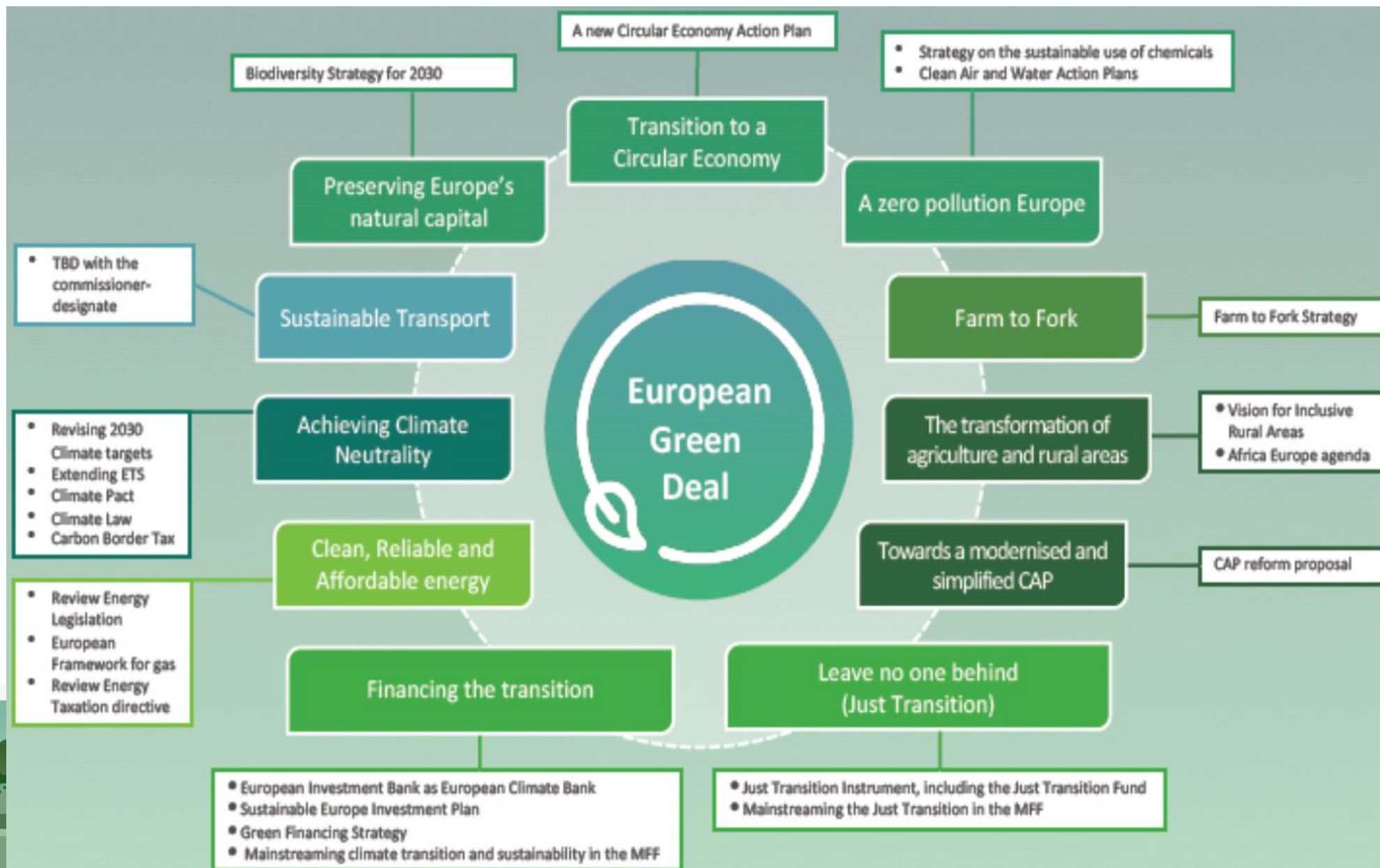
Promotion benefits of plant protein for nutrition, climate and environment

5. Knowledge exchange

1. Initiatives in the EU at regional level
2. Set up a European Platform to bring actors together



THE EUROPEAN GREEN DEAL

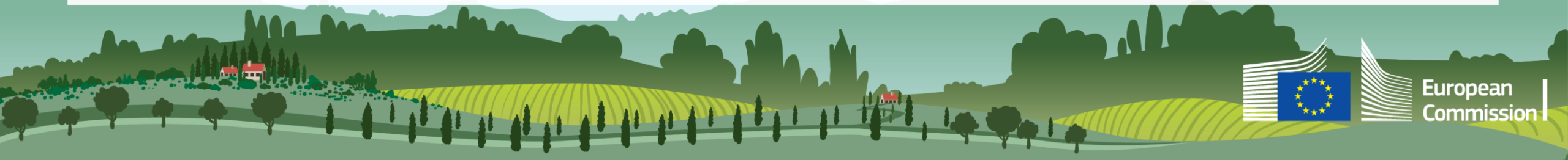


FARM TO FORK STRATEGY

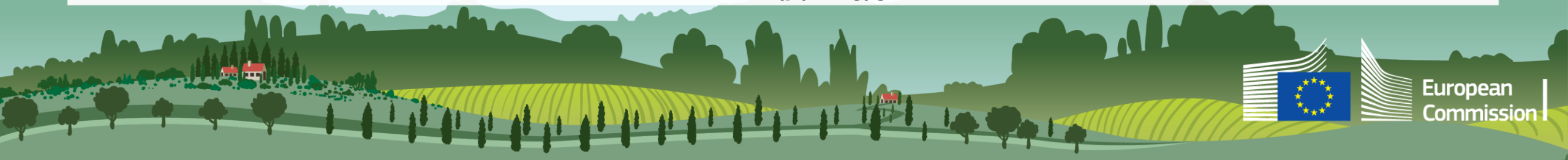
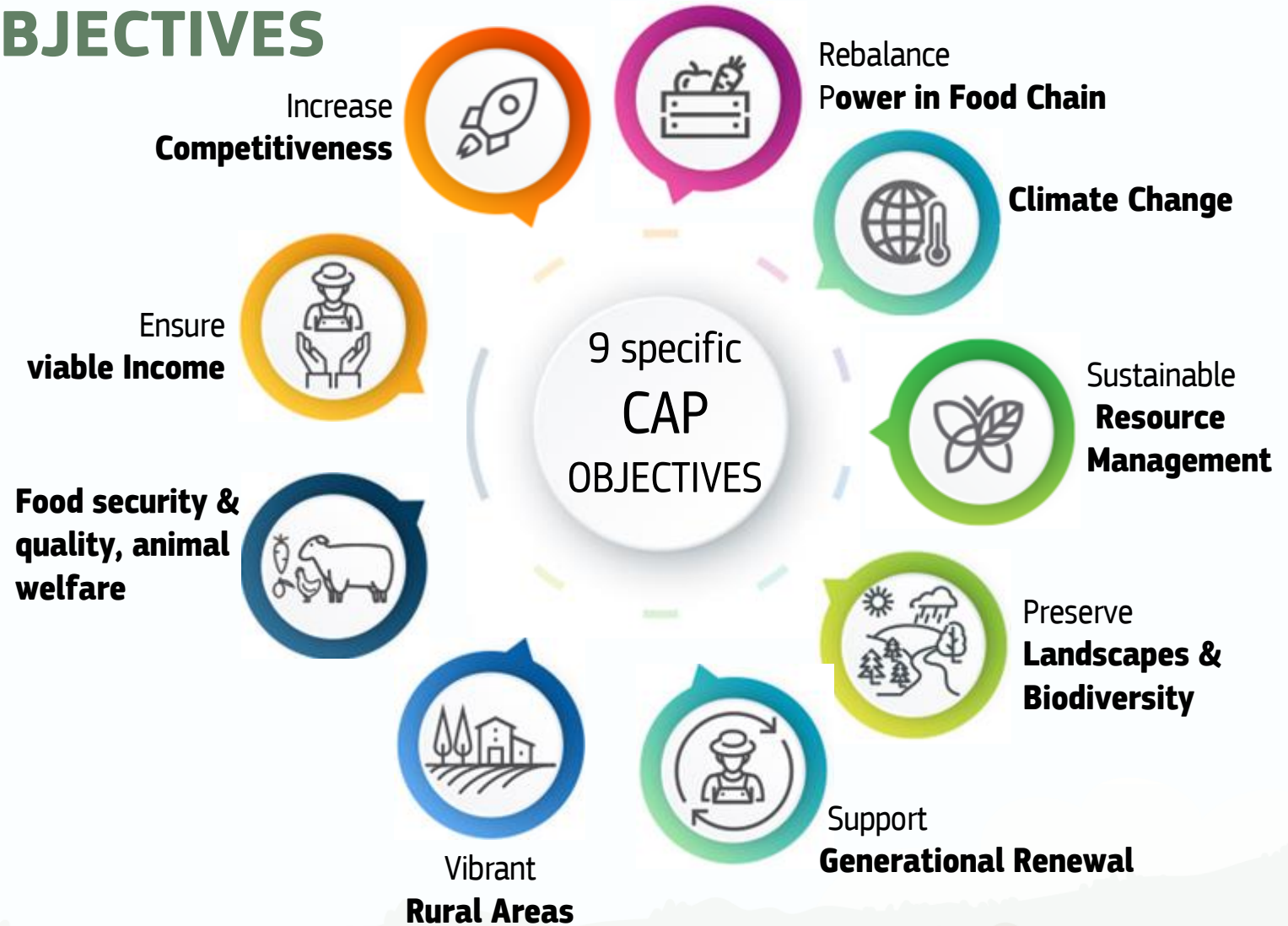


HORIZON EUROPE

- € 100 billion: Most ambitious EU research programme ever
- € 10 billion in cluster on food, bioeconomy, natural resources, agriculture and environment
- Different explicit references to plant proteins in the context of environment, supply chains, balanced diets, farm to fork and green deal



CAP-SPECIFIC OBJECTIVES



European
Commission



KEY STEPS TOWARDS THE CAP STRATEGIC PLAN

1/ SWOT analysis ← Context (impact) indicators



2/ Identification, prioritisation and ranking of needs



In relation with EU legislation on water, air, biodiversity, climate change, energy and pesticides

3/ Intervention strategy



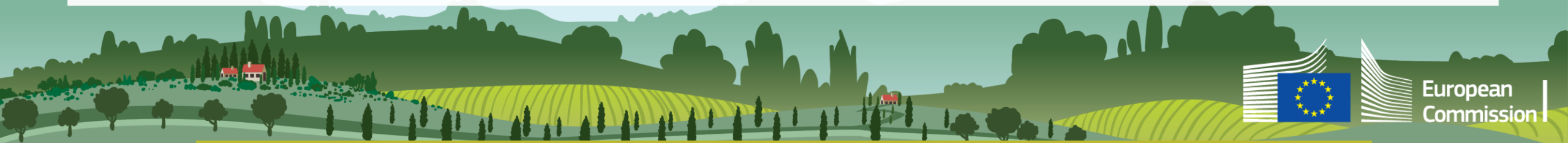
Setting GAEC standards



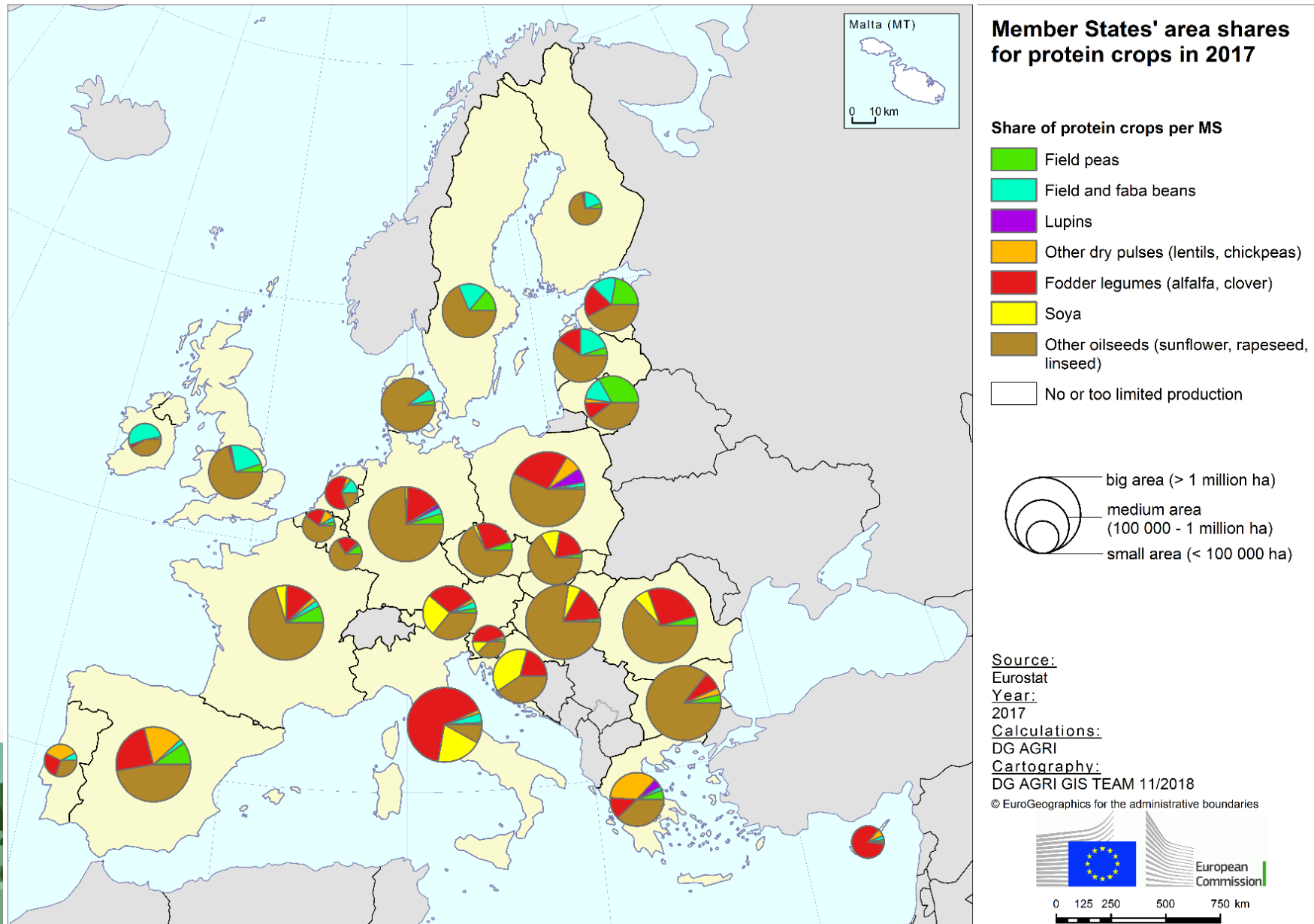
Selection of the interventions and financial allocations



Targets for result indicators

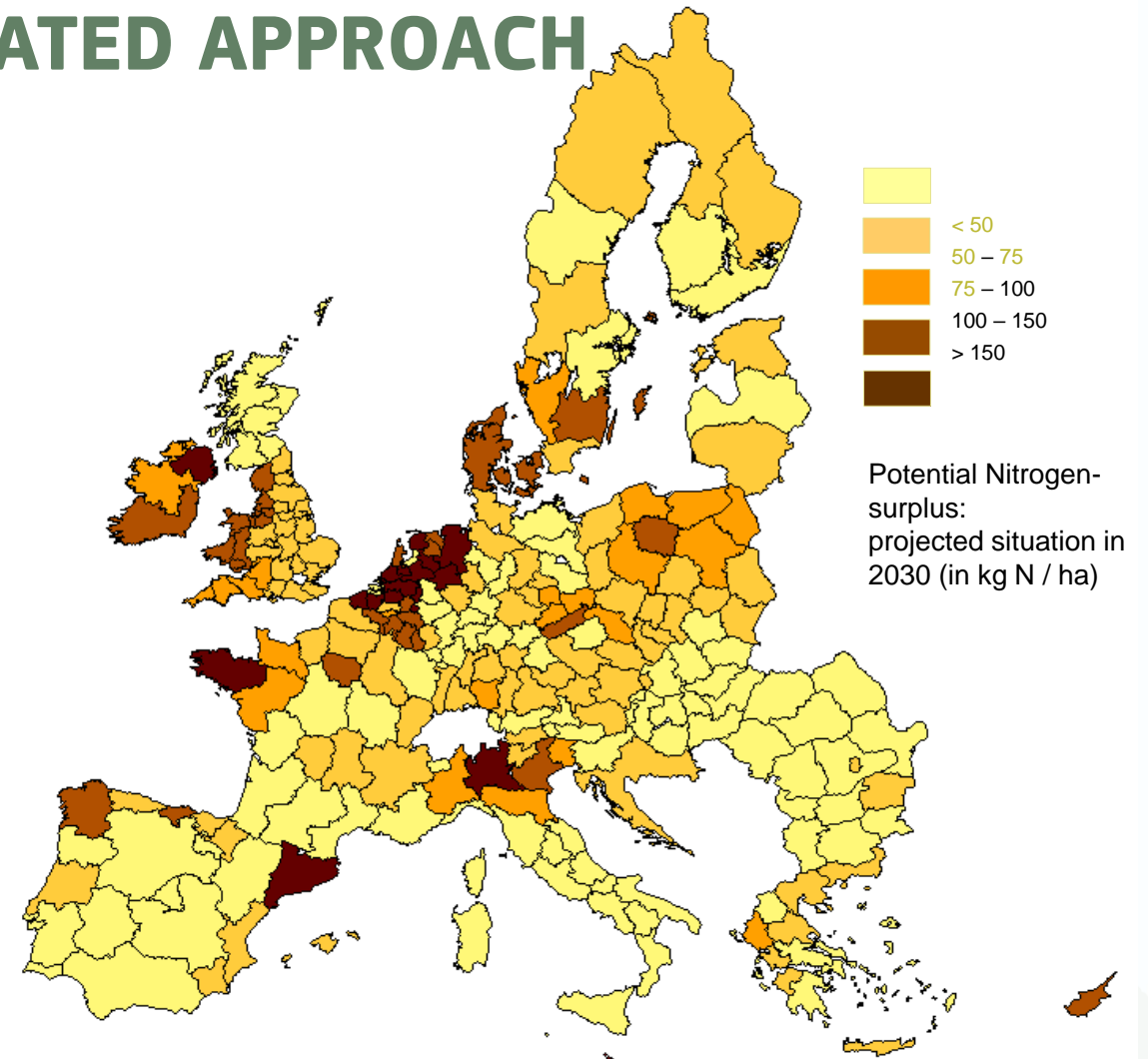


AREA SHARES FOR PROTEIN CROPS IN THE EU



THE NEED FOR A DIFFERENTIATED APPROACH

Projected pressure on the environment due to potential nitrogen surplus in 2030: different impact across the EU

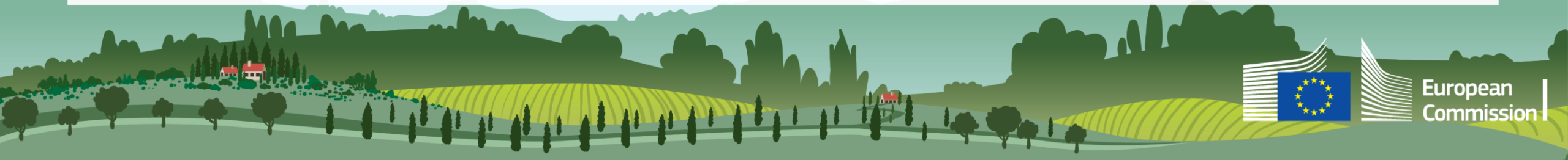
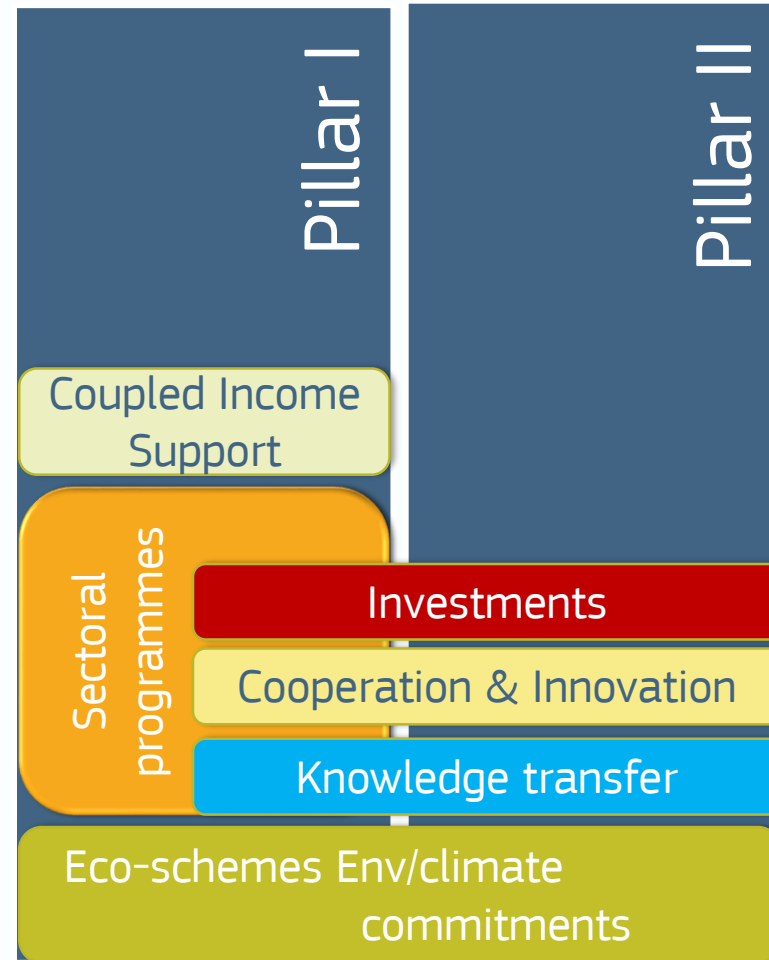


Source: JRC based on the GAPRI model baseline as presented in the DG AGRI 2017 outlook report.

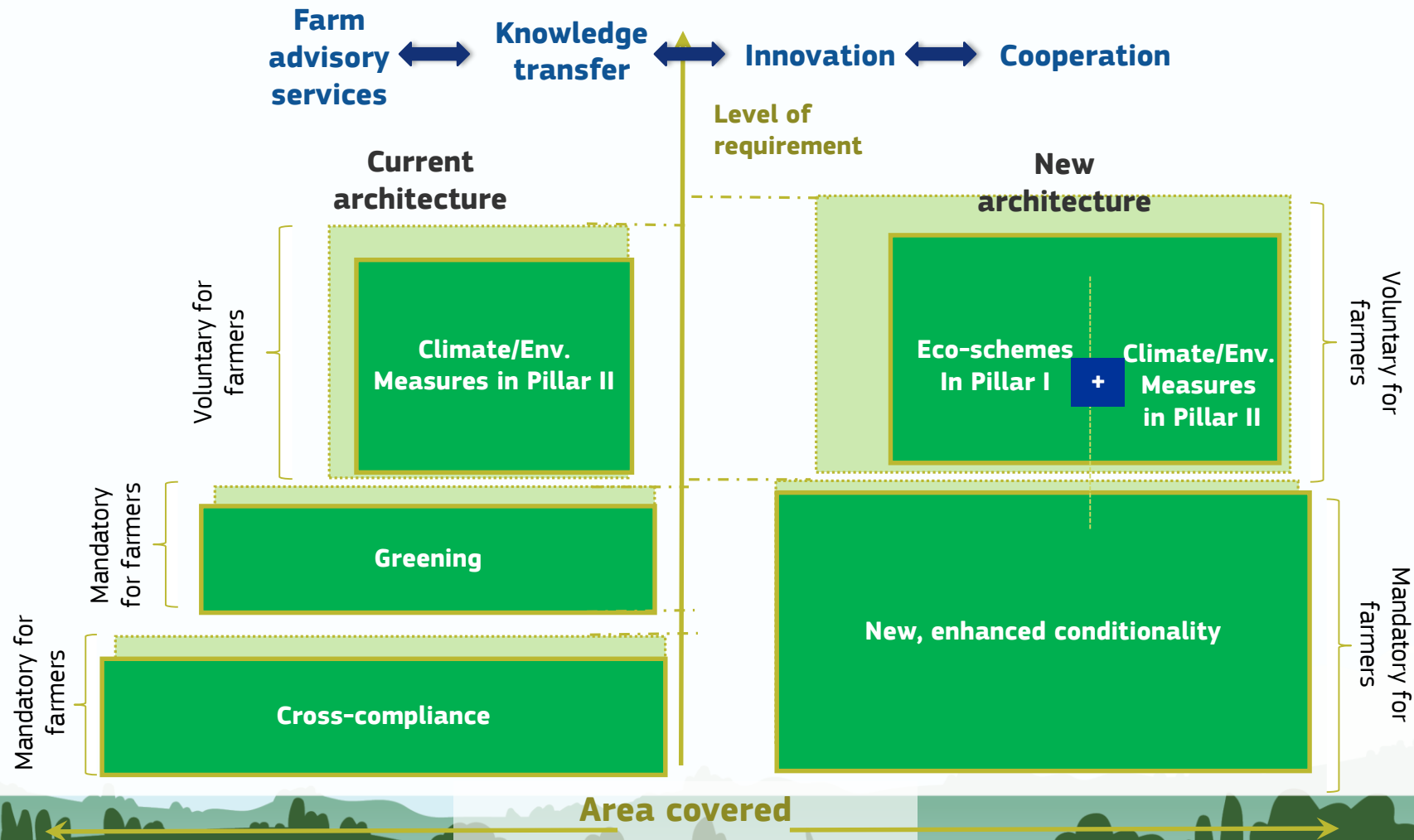


European
Commission

CAP INTERVENTIONS FOR PROTEIN CROPS



CURRENT VS NEW GREEN ARCHITECTURE



European
Commission

RURAL DEVELOPMENT: KNOWLEDGE & ADVICE

- Advisory service, obligatory for MS, should cover economic, environmental & social aspects, technological and scientific information
- Knowledge transfer: promote innovation, access to training and advice, exchange of knowledge

How relevant for protein crops?

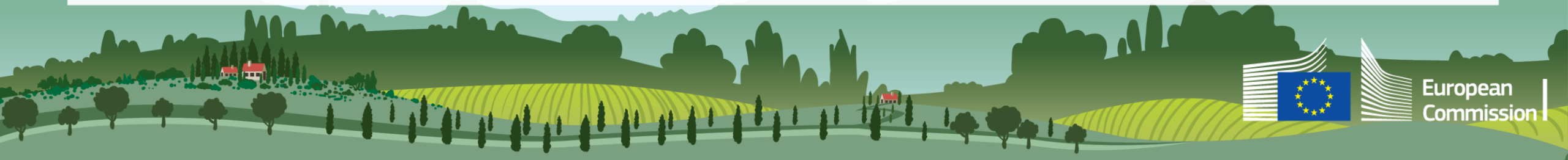
Knowledge transfer and advisory measures can be used to raise awareness on the agronomic and environmental benefits of farming production systems including protein crops or to guide in changing production pattern and to provide tailor made advice to farmers.



RURAL DEVELOPMENT: INVESTMENTS & COOPERATION

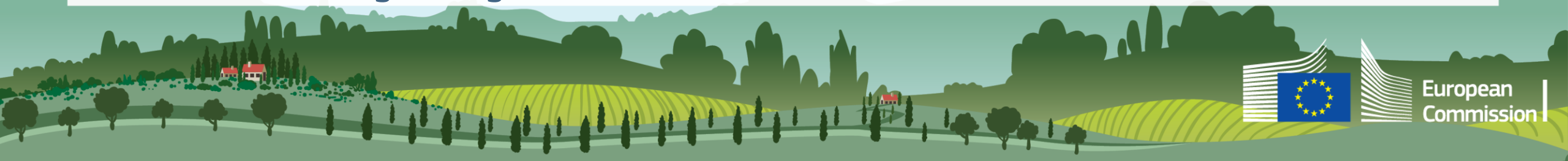
How relevant for protein crops?

- Investments in physical assets for farmers wishing to restructure or change their production orientation e.g. towards protein crops can also be proposed by Member States.
- The cooperation measure promotes interaction between farmers and other actors that can be used for instance for the establishment and development of short supply chains and access to (local) markets. Cost of all aspects of the cooperation is eligible.



CMO SECTORAL PROGRAMMES

- To strengthen the position in the supply chain
- Optional for Member States, with max 3% from Pillar I envelope
- Operational programmes by recognised POs/APOs
- Max 5% of market production of PO/APO
- Objectives:
 - production planning
 - concentration of supply
 - R&D
 - environmental friendly farming practices
 - climate change mitigation
 - quality improvement
 - promotion
 - crisis prevention and management



COUPLED INCOME SUPPORT

- Remains optional for the Member States
- Support decisions are subject to strict pre-conditions:
 - Difficulty of the targeted sector/type of farming, which the needs assessment/SWOT analysis shall also underpin;
 - Importance from economic/social/environmental point of view;
 - Budgetary limit at Member State level (10+2%)



THANK YOU FOR YOUR ATTENTION

Further information is available at:

https://ec.europa.eu/info/files/brochure-environmental-benefits-and-simplification-post-2020-cap_en

